

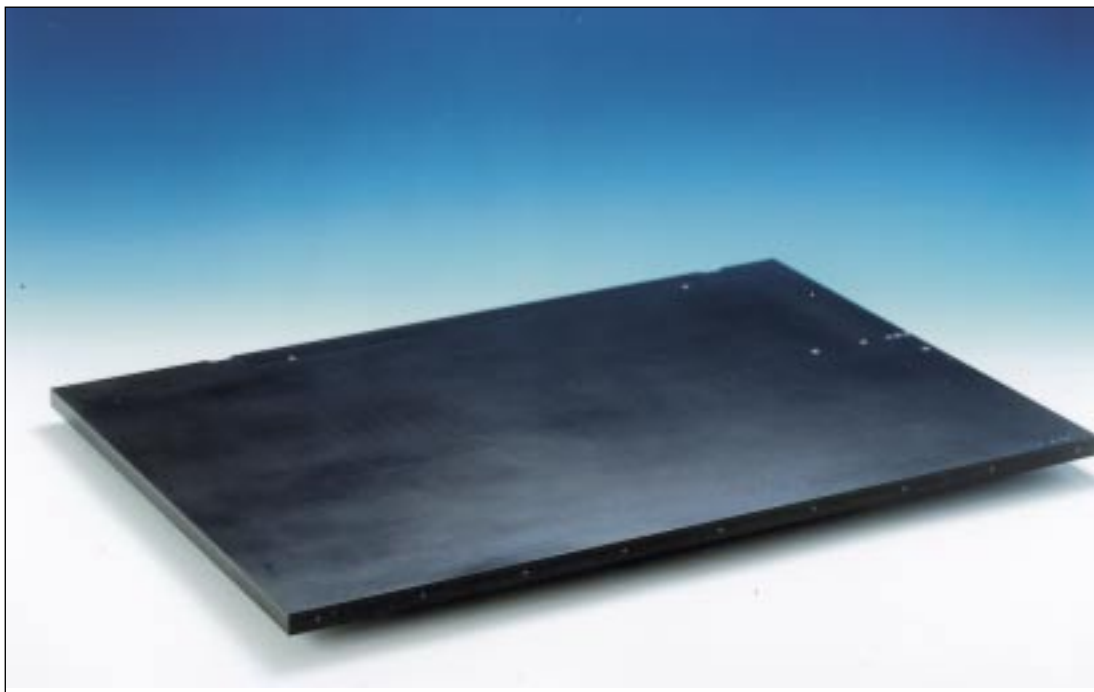
Perforated-grid chucks - special version

Highly accurate vacuum chucks used in photo-optical processes i.e. extremely accurate clamping of printing plates or optical films/foils. Used on machines for the manufacture of printing plates during laser and UV exposure; exposure of film-foils or for thin aluminium base plates. Special dimensions, also division of suction area in several areas or sectors are available on request; i.e. Perforated grid chuck 1.400mm x 2.000mm with 30 μ accuracy.



Perforated-grid chuck with eccentric end stops

These vacuum chucks are made according to customer's request and machine specification. Please use the form on page 98 for your inquiry



Perforated-grid chuck for exposure machine

FLIP-POD™ vacuum system

The FLIP-POD™ vacuum clamping system has been developed for clamping large workpieces in aluminium, plastics or wood. This system can be used on CNC milling or grinding machines.

The advantages at a glance:

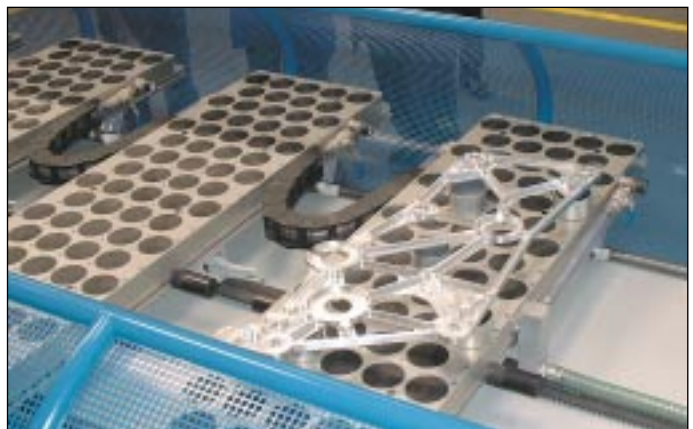
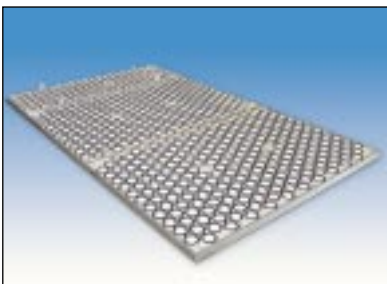
- thanks to a controlled vacuum supply, the workpiece remains in the correct position at all times during machining
- FLIP-POD™ is a modular system and can be used on all common CNC milling machines and even for drilling work
- when not in use all pods store inside the hollows of the pod plate. They are available at any time for a fast changeover from one machining job to another
- FLIP-POD™ reduces preparation times between workpiece changes and thereby increases productivity



Application demonstrating active and inactive FLIP-POD™s



FLIP-POD™ vacuum chuck 6m long made up of three segments

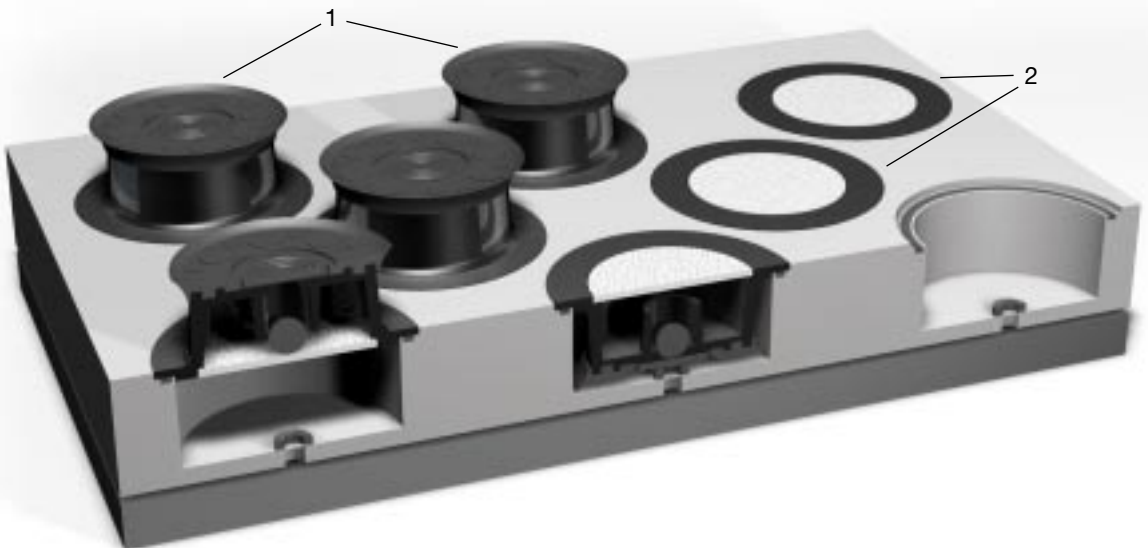


FLIP-POD™-clamping system for a CNC deburring machine, used on aeroplane parts

FLIP-POD™ Vacuum system



FLIP-POD™ clamping system in working position prepared for a large aluminium workpiece with cutouts

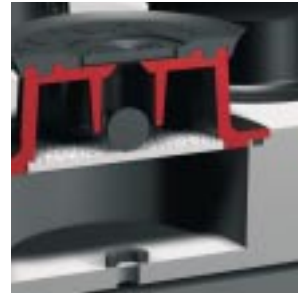


The round polymer pods (1) protrude out of the pod plate when in use. The pods not required lie in a recess cavity (2) of the pod plate. Simply flipping them over activates or deactivates the pods.

FLIP-POD™

Vacuum system

The cross section drawing shows how the pods work. Simply „flipping“ them over puts them in working position. They are automatically switched on when the operator turns them over. All active pods stand 26mm above the pod plate surface, allowing contour milling and recess cutting on the outer contours.



Fixed and retractable locator pods

ensure high accuracy. Locator pods are available in both fixed and retractable versions, either of which fit in any pod cavity. After positioning the workpiece the retractable pods are drawn back into the pod plate as soon as vacuum is switched on, allowing a free path for the cutting tool.



Alu FLIP-POD™ has an accurate, defined workpiece surface. Height tolerance is only 50µ. They are suitable for face machining on both surfaces, especially of metallic workpieces.



FLIP-POD™ with sucker



Retractable and fixed locator pods



ALU FLIP-POD™

Supply FLIP-POD™ Set 100 includes

No.	Name	Pcs
11392	FP Unit	100
11393	FP Sucker	100
11394	FP Center hole gasket	100
11395	FP Large gasket	100
82136	FP Retractable locator pods	3
82137	FP Fixed locator pods	3

FLIP-POD™ Sets, polymer version

No.	Description	Area/Grid	PODS
83100	FLIP-POD™ Set 100	1m ² /100mm	100
83200	FLIP-POD™ Set 200	2m ² /100mm	200
83300	FLIP-POD™ Set 300	3m ² /100mm	300
83400	FLIP-POD™ Set 400	4m ² /100mm	400

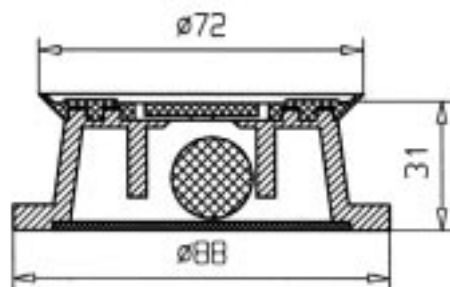
FLIP-POD™ Accessories and spare parts



No.	Description
I	11392 FP Unit complete with filter element and ball
II	11393 FP Sucker, which is mounted onto the unit
III	11395 FP Large seal for the upper seal slot
IV	11394 FP Center hole seal for the pod cavity

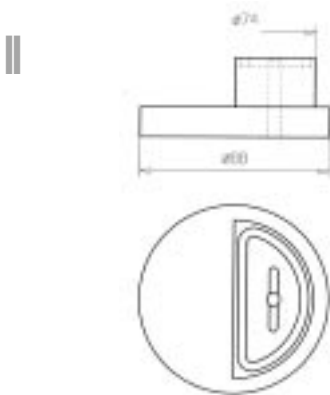
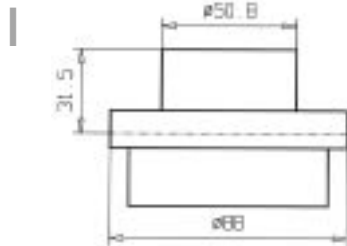


Complete Witte FLIP-POD™
Alternative version

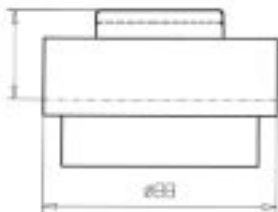


FLIP-POD™ Accessories and spare parts

	No.	Description
I	82136	FP Retractable locator pod automatically retract when vacuum is applied
II	82138	FP Polymer-Half-Pod (1/2),
III	11396	FP Lift ring 1/2"
IV	85662	FP Transfer Pod For easy positioning of large workpieces over the Flip-Pods



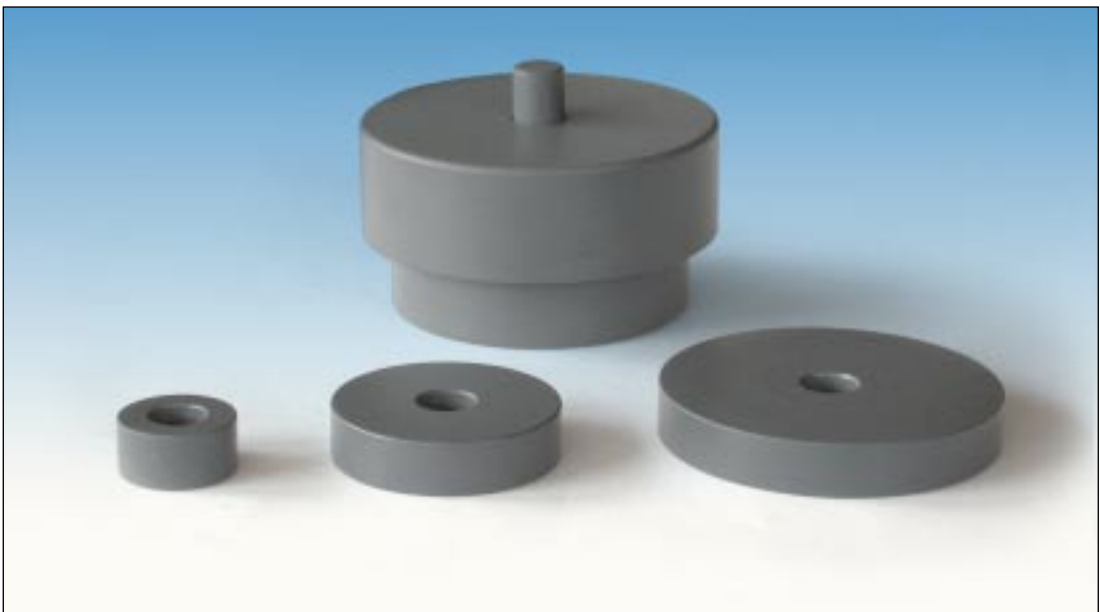
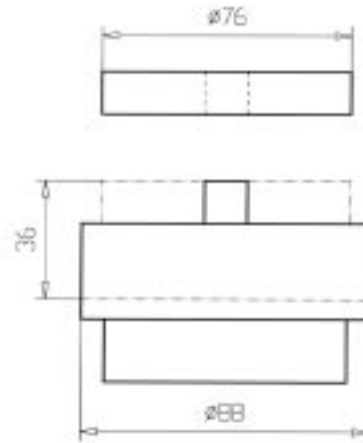
IV Witte Transfer FLIP-POD™, polymer version



FLIP-POD™ Accessories and spare parts



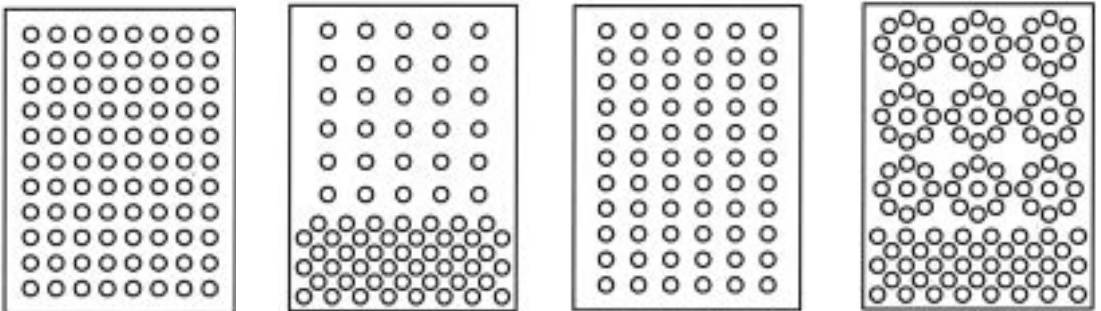
	No.	Name
I	82137	FP Fixed locator pods incl. unit, pins and spacer disks
II	89093	FLIP-POD™-Video





Pod-Plate, ready for use, with ALU FLIP-POD™'s

The sketches show a range of possible pod panel designs.



The user can choose the panel design that best suits the parts being machined. The pod panel can be laid out in almost any design and combination.

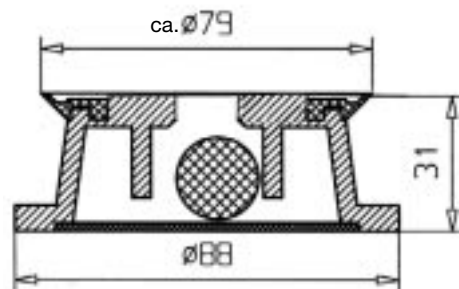
ALU FLIP-POD™ Accessories and spare parts



No.	Name
I 84408	FP Complete with seal, filter element and ball (85662 and 11395 order seperately)
II 30584	FP Seal for Alu-Pod
III 12124	FP Polymer Ball $\varnothing 15,8$ mm
IV 12125	FP Filter $\varnothing 61 \times 3$ mm
V 11395	FP Large Seal for Pod Plate $\varnothing 88 \times 4,5$ mm
VI 11394	FP Center hole gasket for pod cavity $\varnothing 38 \times 6$ mm

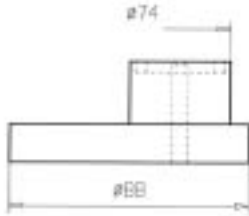


Witte ALU-FLIP-POD™ in its basic state without seals



ALU FLIP-POD™ Accessories and spare parts

No.	Name
85328	FP Alu Half-Pod incl. 1m seal ø5mm



Half pod, alu

